

Overview of the Insights Discovery Accreditation (IDA)

This document is for prospective new Practitioners who we look forward to welcoming on the Insights Discovery Accreditation very soon. The purpose of this document is to give you a little more understanding of the pre-work required for the four-day accreditation itself, and what happens afterwards.

We hope that this brief document will get you excited about your journey with Insights Discovery and that it will also inform you of the necessary steps and time to ensure you are well prepared to get the most out of your experience.

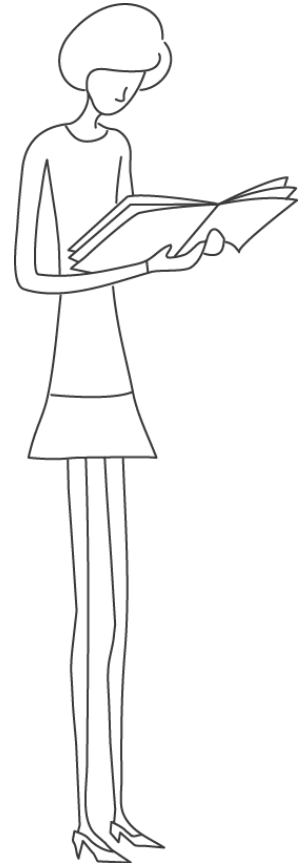
Before, during and after the IDA

The Insights Discovery Accreditation is four days in duration. There are also essential pre-work and post-work elements involved in the accreditation. We have outlined below a summary of these stages:

Pre IDA

During the four-week period before your accreditation you will be receiving email communication with some important actions. Below is a brief description of these actions, we hope this will help you with your planning.

- **Action 1: Registration email** – Complete an online registration form with your basic personal information (takes up to 3 minutes).
**Once you complete registration you will automatically receive confirmation containing the required pre –work. If you do not receive this email within 24 hours please get in touch as soon as possible.*
- **Action 2: Completing your Insights Discovery Profile** – Complete the online evaluator by following the link in the email (takes up to 15 minutes).
- **Action 3: Watch the videos** - There are 3 important videos to watch at your own leisure but required before attending the accreditation.
- **Action 4: Book your accommodation** - If required, book your hotel accommodation for the duration of the accreditation. Details of our venues, contact details and rates can be found on your confirmation email.



Overview of the four-day programme

Below is a brief overview of the agenda across the 4 days. at this stage.

Day 1

9am – 5.30pm

Insights Discovery Theory

Develop a thorough understanding of the Insights Discovery methodology and learn about the technical details behind the Insights Discovery model.

Day 2

8.30am – 5pm

Preparing to Deliver

Receive all the resources and the detailed walkthrough you need to deliver an introductory Insights Discovery workshop, seeing how the theory learned on Day 1 is put into practice.

Day 3

8.30am – 5pm

Delivering Insights Discovery

Explore the magic of working with Insights Discovery and experience its power by having a go at facilitating a section of an introductory workshop and coaching with the Personal Profile.

Day 4

8.30am – 4pm

Applying Insights Discovery

Look at the practical ways in which you can use Insights Discovery to address common business challenges and explore what you can do to keep the magic of Insights Discovery alive.

Post IDA

You will receive an email from us shortly after the IDA with the following information to help embed the learning and support you as a new practitioner.

- **Confirmation of Learning**

After the IDA you will be asked to complete a Confirmation of Learning paper.

- **Practice Profiles**

We will invite you to nominate three people to complete the evaluator and receive their own Insights Discovery Personal Profile. You will then use these to practice coaching with colleagues, potential customers or family and friends.

- **Resources received after the IDA**

In addition to extensive resources handed out on the programme, afterwards you will also have:

- Access to Connections, our practitioner website, where you can connect with the community of practitioners and access all of our latest learning materials.
- Open invites to regular CPD webinars designed to enhance your learning and show you how to work with Insights Discovery in a variety of workplace situations; various invitations to events such as our annual CP conferences and networking events.